

An aerial photograph of a large, multi-story stone manor house with a complex roofline featuring numerous chimneys and gables. The house is surrounded by lush green lawns and dense forests. In the background, a golf course is visible with a prominent blue water feature and a white domed pavilion. The sky is overcast with soft, diffused light.

MEET

*Hand*PICKED
HOTELS



MEETINGS & EVENTS

CONTENTS

- 3 Our Venues
- 4 Beyond Business
- 5 Hand Picked For You
- 6 Exclusive Use
- 7 Team Building
- 8 Food & Drink
- 9 Extra Touches
- 10 M25 & South East
- 22 South West
- 30 Midlands
- 40 North
- 48 Scotland
- 52 Channel Islands
- 62 Group Capacity Chart



OUR VENUES

M25 & South East

1. Brandshatch Place Hotel & Spa Fawkham, Kent
2. Buxted Park Hotel Ashdown Forest, East Sussex
3. Chilston Park Hotel Lenham, Kent
4. Nutfield Priory Hotel & Spa Nutfield, Surrey
5. Woodlands Park Hotel Cobham, Surrey

South West

6. Audleys Wood Hotel Basingstoke, Hampshire
7. Bailbrook House Hotel Bath, Somerset
8. Rhinefield House Hotel The New Forest, Hampshire

Midlands

9. Ettington Park Hotel Stratford-upon-Avon, Warwickshire
10. Fawsley Hall Hotel & Spa Fawsley, Northamptonshire
11. New Hall Hotel & Spa Sutton Coldfield, Birmingham
12. Stanbrook Abbey Hotel Callow End, Worcester

North

13. Crathorne Hall Hotel Yarm, North Yorkshire
14. Rookery Hall Hotel & Spa Nantwich, Cheshire
15. Wood Hall Hotel & Spa Wetherby, West Yorkshire

Scotland

16. Norton House Hotel & Spa Edinburgh

Channel Islands

17. Braye Beach Hotel Braye Street, Alderney
18. Fermain Valley Hotel Fermain Lane, St Peter Port, Guernsey
19. Grand Jersey Hotel & Spa St Helier, Jersey
20. L'Horizon Beach Hotel & Spa St Brelade, Jersey
21. St Pierre Park Hotel, Spa & Golf Resort St Peter Port, Guernsey



BEYOND BUSINESS

Welcome to our collection of unique meeting and event spaces located across the UK and Channel Islands. Our stunning buildings and beautiful grounds offer business teams the opportunity to escape their everyday.

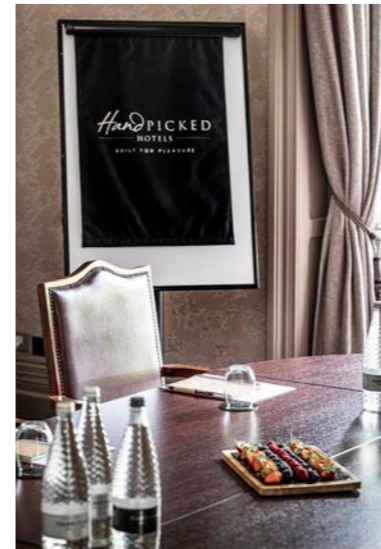
Our expert event planners are on hand to assist in creating bespoke packages based on your individual requirements. Together we create unforgettable shared experiences.

ESG is a cornerstone of our culture. From supporting local communities to reducing our environmental impact, enjoy your experience with peace of mind that Hand Picked Hotels is committed to its ambitious sustainability targets.





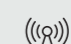





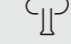




HAND PICKED FOR YOU

Board meetings, away days, training events and conferences for day, overnight or exclusive use events. Our collection offers a range of venue spaces including a mix of traditional boardrooms, large conference suites, breakout rooms for training or dining as well as modern, dedicated conference centres - there is an abundance of adaptable space, inside and out, to host your event your way.



AT A GLANCE

-  21 unique venues
-  Characterful meeting rooms
-  Modern dedicated conference centres
-  Fresh seasonal menus
-  Complimentary high speed Wi-Fi
-  Wellness facilities
-  Multi-site enquiry team
-  Dedicated account managers
-  Event management specialists
-  Acres of private grounds and gardens
-  Exclusive use
-  Complimentary car parking
-  Electric vehicle charge points



EXCLUSIVE USE

For ultimate privacy and optimum use of space, we offer Exclusive Use of our country house or island resort venues. Alternatively you can choose Part-Exclusive Use; with a self-contained section of a venue just for your group. Our specialist event teams help you plan seamlessly in advance and deliver an exceptionally high quality yet discreet service during the entire event itself - providing you with a totally bespoke corporate experience like no other.

Our house is your home

- Use of all bedrooms for overnight guests
- Flexibility to use public areas as event spaces
- Acres of outdoor space to enjoy
- Adjoining meeting rooms that flow seamlessly
- Private cinemas at selected locations
- Our dedicated team working just for you
- Ideal for exclusive car and product launches



TEAM BUILDING

With acres of private grounds, gardens and woodland, there is an abundance of space at each of our venues to enjoy. From the intimate to the extravagant, we go above and beyond to tailor-make team building experiences which allow delegates to engage and reconnect with one another.

Example activities:

- It's a Knockout
- Archery
- Duck herding
- Themed sports day
- Quad biking
- Axe throwing
- Mini hovercrafts



FOOD & DRINK

Our chefs focus on fresh, seasonal ingredients that cater for all dietary requirements with minimal food miles. Indulgent treats are not forgotten though and these will most definitely be enjoyed during any Hand Picked experience.

Expert event planners help you to bring your event food and drink together with energising breaks, seasonal lunches and dinners and our signature in-room 'help yourself' mini bars.

Nourished and energised

Tea and coffee on arrival with fresh fruit and pastries

In room mini fridge with soft drinks and snacks

Morning break with tea and coffee, fresh fruit, savoury snacks and smoothies

Seasonal conference lunch with main course, variety of side dishes and dessert

Afternoon break with tea and coffee, fresh fruit, sweet snacks and smoothies

Three course restaurant dinner or a more relaxed option on request

EXTRA TOUCHES

Make it memorable

We have some sensational upgrade options available to turn a great event into something quite remarkable. We welcome and encourage your own thoughts and ideas and can't wait to help you create an event that's completely bespoke to you and your event objectives.



M25 & SOUTH EAST



1. Brandshatch Place Hotel & Spa
Fawkham, Kent



2. Buxted Park Hotel
Ashdown Forest, East Sussex



3. Chilton Park Hotel
Lenham, Kent



5. Woodlands Park Hotel
Cobham, Surrey



4. Nutfield Priory Hotel & Spa
Nutfield, Surrey

M25 & SOUTH EAST

At a Glance

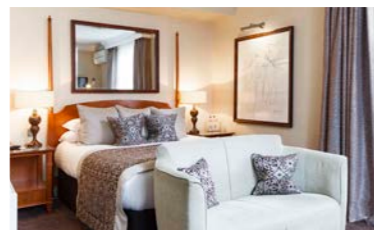
Train services from within 30 minutes of Central London

Access to London Heathrow, Gatwick and City airports

Access to Ebbfleet and Ashford International train stations

Connections to Eurostar services and Channel ports

Easy access to the M25, M23, M20 and other major roads



BRANDSHATCH PLACE

HOTEL & SPA
FAWKHAM, KENT



At a Glance

38 bedrooms
6 flexible meeting rooms
Host up to 160 delegates



Nearest Motorway Link

M25 / M20 5 miles



Nearest Airport

London City 20 miles
Gatwick 30 miles



Nearest Train Station

Longfield 2 miles
Ebbsfleet International 7 miles /
17 minutes to London St Pancras



12 Acres

Private grounds



Health Club and Spa

Gym, pool, classes, spa



Wi-Fi

Complimentary high speed Wi-Fi



Parking

Complimentary parking



Electric Vehicle Charge Point

On-site charging

BRANDSHATCH PLACE HOTEL & SPA

	Max Capacity	Cabaret	Classroom	Theatre	U-Shape	Boardroom	Reception	Dining	Dimensions (metres)	Meeting Rooms	Bedrooms
Terrace Suite	160	60	48	160	36	31	150	110	L14.4 x W11.1 x H3	6	38
Garden Room	24	15	9	24	10	14	-	-	L9.3 x W5.7 x H2.1		
Ash	36	20	12	36	15	14	-	30	L7.2 x W6.2 x H2.7		
Boardroom	36	20	12	36	15	14	-	30	L8.3 x W6.7 x H2.8		
Oak	50	-	-	50	-	27	-	40	L11 x W4.2 x H2.2		
Atrium	150	-	-	-	-	-	150	-	L13.4 x W10.9 x H3.9		

Located just ten minutes from the M25 and M20, Brandshatch Place is a Georgian mansion set in the Kent countryside just 25 miles from Central London.

The largest space, the Terrace Suite, has its own dedicated entrance, complete with reception area, cloakroom and outdoor courtyard. There are also extensive leisure facilities on-site where delegates can unwind and a large front lawn ideal for team building activities.

Brandshatch Place Hotel & Spa Brands Hatch Road, Fawkham, Kent DA3 8NQ (sat nav DA3 8PD)
01474 875000 brandshatchplace@handpicked.co.uk



BUXTED PARK

HOTEL
ASHDOWN FOREST, EAST SUSSEX



At a Glance

43 bedrooms
5 flexible meeting rooms
Host up to 200 delegates
Projection Theatre



Nearest Motorway Link
M25/M23 24 miles



Nearest Airport
Gatwick 24 miles



Nearest Train Station
Buxted 0.5 miles / Uckfield 2.7 miles



312 Acres
Private grounds



Wi-Fi
Complimentary high speed Wi-Fi



Parking
Complimentary parking

BUXTED PARK HOTEL

	Max Capacity	Cabaret	Classroom	Theatre	U-Shape	Boardroom	Reception	Dining	Dimensions (metres)	Meeting Rooms	Bedrooms
Ballroom	200	84	60	180	45	50	200	120	L13.6 x W9.1 x H4	5	43
Library	60	21	18	60	20	24	60	30	L8.4 x W6.2 x H4		
Blue Drawing Room	30	14	8	30	12	16	30	20	L6 x W6.3 x H4		
Red Drawing Room	60	21	18	60	20	22	60	30	L8.5 x W6.3 x H4		
Projection Theatre	55	-	-	55	-	-	55	-	L9 x W7 x H2.5		

Situated within 312 acres of the finest East Sussex parkland, Buxted Park is a rural Palladian mansion located 35 minutes south of the M25 and 30 minutes from both Tunbridge Wells and Brighton.

Light and airy meeting rooms with high ceilings and stately features promise to host memorable events, especially exclusive use, while the breath-taking grounds lend perfectly to team building or alfresco meetings.

Buxted Park Hotel Buxted, Near Uckfield, East Sussex TN22 4AY (sat nav TN22 4AY)
01825 733333 buxtedpark@handpicked.co.uk



CHILSTON PARK

HOTEL
LENHAM, KENT

At a Glance



53 bedrooms
8 flexible meeting rooms
Host up to 150 delegates
Self-contained and semi exclusive
Coach House and meeting rooms



Nearest Motorway Link
M25/M20 6 miles



Nearest Airport
Gatwick 43 miles



Nearest Train Station
Lenham 1.5 miles
Ashford International 12 miles /
37 minutes to London St Pancras



77 Acres
Private grounds



Wi-Fi
Complimentary high speed Wi-Fi



Parking
Complimentary parking

CHILSTON PARK HOTEL

	Max Capacity	Cabaret	Classroom	Theatre	U-Shape	Boardroom	Reception	Dining	Dimensions (metres)	Meeting Rooms	Bedrooms
Orangery	150	30	30	100	18	20	150	50	L9.4 x W8.1 x H2	8	53
Fitzhammond Suite	150	46	50	120	40	50	150	100	L15.2 x W7.8 x H3		
- Miller Suite	100	30	30	40	20	20	100	50	L9.4 x W7.8 x H3		
- Viscount	30	18	20	30	12	14	-	30	L8.9 x W5.3 x H2.9		
The Coach House	120	42	40	100	36	40	120	60	L13.1 x W5.9 x H3.2		
Tack Room	10	-	-	-	-	10	-	-	L6.7 x W4.7 x H2.5		
Library	16	6	8	15	8	10	-	16	L5.4 x W4.8 x H2.5		
Green Room	20	12	10	20	10	14	20	20	L6 x W4.5 x H2.5		
Hamilton	10	-	-	-	6	10	-	10	L6.5 x W3.9 x H2.8		

Chilston Park is a charming and welcoming venue with flexible space for meetings and events just moments from the M20 and close to Ashford and Maidstone.

Ideal for delegates travelling from London, or into the UK via the Channel Tunnel, Chilston Park has exemplary function space including elegant meeting rooms in the main house and the self-contained semi exclusive Grade II listed Coach House.

Chilston Park Hotel Sandway, Lenham, Maidstone, Kent ME17 2BE (sat nav ME17 2BE)
01622 859803 chilstonpark@handpicked.co.uk



NUTFIELD PRIORY

HOTEL & SPA
NUTFIELD, SURREY



At a Glance

58 bedrooms
9 flexible meeting rooms
Host up to 120 delegates



Nearest Motorway Link

M25 4 miles



Nearest Airport

Gatwick 10 miles/Heathrow 30 miles



Nearest Train Station

Redhill 2 miles/30 minutes to London Bridge



12 Acres

Private grounds



Health Club and Spa

Gym, pool, classes, spa



Wi-Fi

Complimentary high speed Wi-Fi



Parking

Complimentary parking



Electric Vehicle Charge Point

On-site charging

NUTFIELD PRIORY HOTEL & SPA

	Max Capacity	Cabaret	Classroom	Theatre	U-Shape	Boardroom	Reception	Dining	Dimensions (metres)	Meeting Rooms	Bedrooms
Fielden Suite	120	60	50	100	40	42	120	100	L12.6 x W8.8 x H4.9	9	58
Gibson	70	35	35	70	32	34	70	60	L11 x W8.8 x H3.7		
Kenley	30	14	-	30	-	14	-	-	L8.6 x W4.6 x H3.1		
Leigh	20	-	-	-	-	16	-	20	L7 x W6 x H4.6		
Worth	12	-	-	-	-	10	-	12	L6.5 x W5.5 x H4.6		
Earlwood	15	-	-	15	-	8	-	-	L5.4 x W4.6 x H3.1		
Study	10	-	-	-	-	8	-	10	L5.9 x W3.5 x H3.7		
Godstone	9	-	-	9	-	6	-	-	L5.2 x W3 x H3.1		
Oxted	9	-	-	9	-	6	-	-	L5.6 x W3 x H3.1		

With commanding rural views overlooking three counties, it is easy to forget that Nutfield Priory is situated just minutes from the M25, close to London Gatwick Airport and a 30 minute direct train ride from London Victoria to Redhill. The hotel offers a welcoming mix of period charm and contemporary elegance with meeting rooms that boast natural daylight and impressive features from fireplaces to traditional bay windows. Nutfield Priory also sits within impressive grounds ideal for outdoor dining and a full range of team building activities.

Nutfield Priory Hotel & Spa Nutfield, Near Redhill, Surrey RH1 4EL (sat nav RH1 4EL)
01737 824400 nutfieldpriory@handpicked.co.uk



WOODLANDS PARK

HOTEL
COBHAM, SURREY



At a Glance

57 bedrooms
8 flexible meeting rooms
Host up to 200 delegates



Nearest Motorway Link

M25 6 miles



Nearest Airport

Heathrow 16 miles/Gatwick 20 miles



Nearest Train Station

Cobham 1 mile/Leatherhead 1 mile
40 minutes to London Waterloo



8 Acres

Private grounds



Gym

On-site fitness room, multi-sports court



Wi-Fi

Complimentary high speed Wi-Fi



Parking

Complimentary parking



Electric Vehicle Charge Point

On-site charging

WOODLANDS PARK HOTEL

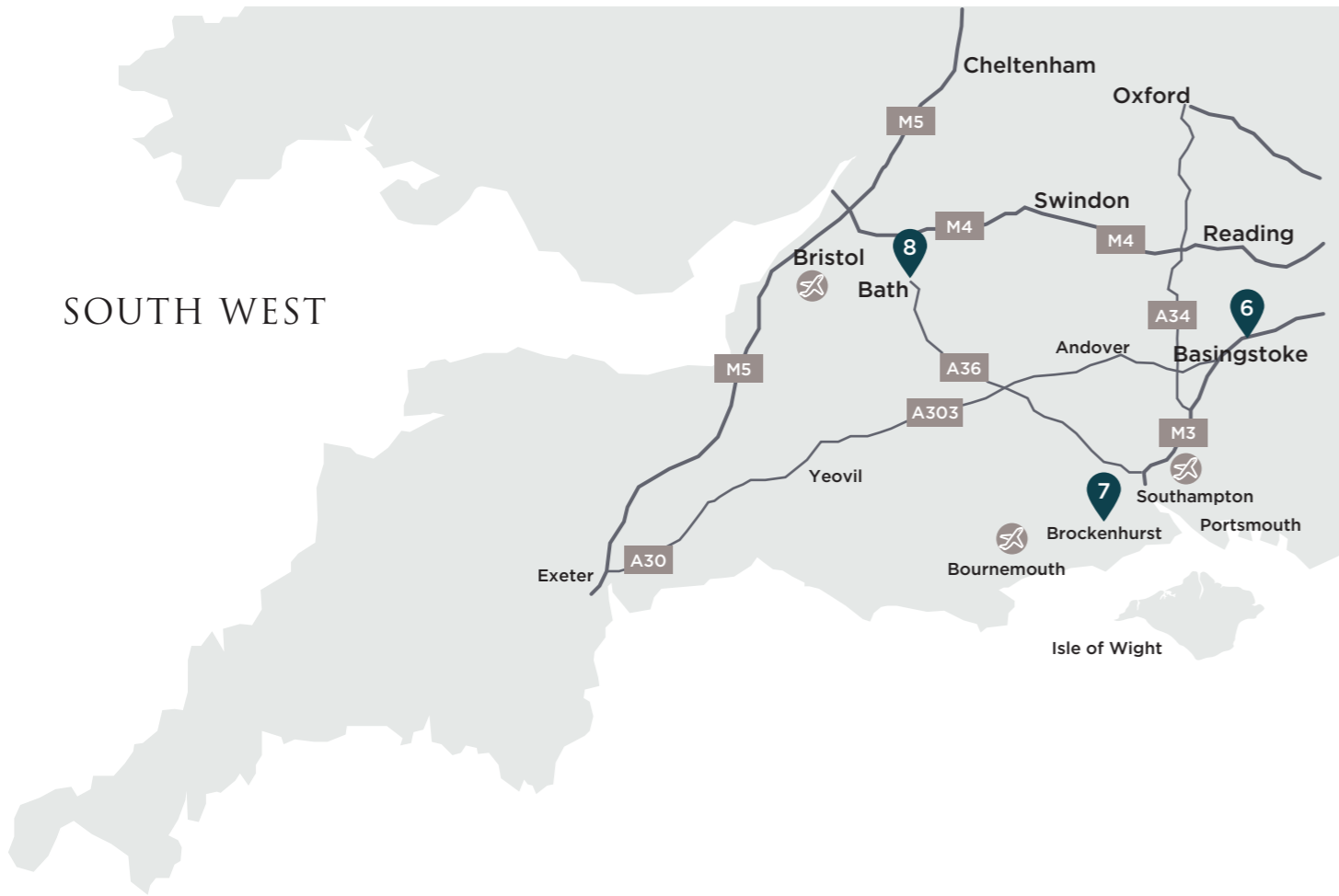
	Max Capacity	Cabaret	Classroom	Theatre	U-Shape	Boardroom	Reception	Dining	Dimensions (metres)	Meeting Rooms	Bedrooms
Prince of Wales Suite	200	75	56	200	45	45	200	150	L13 x W12 x H3	8	57
Cornwall Suite	100	42	30	80	30	30	100	70	L13 x W6 x H3		
Drawing Room	70	24	25	70	26	24	50	50	L11 x W5 x H3		
Sitting Room	40	20	14	35	18	20	30	30	L8 x W6 x H3		
Study	30	14	10	25	10	14	25	20	L7 x W6 x H3		
Lancaster Suite	30	-	-	-	-	-	30	-	L7.7 x W6.7 x H3		
Boardroom	8	-	-	-	-	8	-	8	L6 x W3 x H3		
Garden Room	12	-	-	-	-	8	-	12	L5 x W4 x H3		

Woodlands Park is a charming Victorian property located between J9 and J10 of the M25 in Surrey, with easy access to Heathrow and Gatwick airports and only 40 minutes from London Waterloo and Victoria train stations.

An inspiring setting for delegates, Woodlands Park has a range of elegant function spaces with period features and an abundance of natural daylight. Its brand new terrace opening out onto lawns is also ideal for outdoor dining and team building events.

Woodlands Park Hotel Woodlands Lane, Stoke D'Abernon, Cobham, Surrey KT11 3QB (sat nav KT11 3QB)
01372 843933 woodlandspark@handpicked.co.uk

SOUTH WEST



6. Audleys Wood Hotel
Basingstoke, Hampshire



7. Rhinefield House Hotel
The New Forest, Hampshire

SOUTH WEST

At a Glance

Prime locations for Reading, Bath city centre and the New Forest

Access to Southampton, Bristol and Bournemouth airports

Connections to M3, M4 and other major roads



8. Bailbrook House Hotel
Bath, Somerset



AUDLEYS WOOD

HOTEL
BASINGSTOKE, HAMPSHIRE

At a Glance



68 bedrooms
6 flexible meeting rooms
Host up to 200 delegates
Garden Pavilion



Nearest Motorway Link
M3 2 miles



Nearest Airport
Southampton 31 miles
Heathrow 40 miles



Nearest Train Station
Basingstoke 2 miles
Easy access to London



7 Acres
Private grounds



Wi-Fi
Complimentary high speed Wi-Fi



Parking
Complimentary parking



Electric Vehicle Charge Point
On-site charging

AUDLEYS WOOD HOTEL

	Max Capacity	Cabaret	Classroom	Theatre	U-Shape	Boardroom	Reception	Dining	Dimensions (metres)	Meeting Rooms	Bedrooms
Garden Pavilion	200	160	80	200	45	40	200	200	L30 x W12 x H2.3	6	68
Sir George Bradshaw	50	32	12	50	20	18	50	40	L7.2 x W7 x H2.8		
Lord Camrose	50	32	12	50	20	18	50	-	L7.2 x W7 x H2.8		
Lord Bolton	30	12	10	30	12	16	30	-	L7.2 x W5.2 x H2.8		
Lord Curzon	30	12	10	30	12	16	30	-	L7.2 x W5.2 x H2.8		
Simonds Room	30	12	8	30	12	16	30	20	L7.2 x W5.2 x H2.8		

A former Victorian country mansion, Audleys Wood is located within easy reach of major motorways making it an ideal retreat from the capital.

The hotel offers wonderful character and charm, with six flexible meeting rooms displaying original features blended with contemporary décor and lots of natural light. The largest space, the Garden Pavilion, has its own dedicated entrance, complete with foyer, sound insulation, air conditioning and heating, as well as a private patio and hog roast machine.

Audleys Wood Hotel Alton Road, Basingstoke, Hampshire RG25 2JT (sat nav RG21 3BA)
01256 817555 audleyswood@handpicked.co.uk



BAILBROOK HOUSE

HOTEL
BATH, SOMERSET

At a Glance



88 bedrooms
12 flexible meeting rooms
Host up to 200 delegates
Dedicated conference wing



Nearest Motorway Link
M4 8 miles



Nearest Airport
Bristol 20 miles



Nearest Train Station
Bath Spa 2.5 miles



20 Acres
Private grounds



Gym
On-site fitness room



Wi-Fi
Complimentary high speed Wi-Fi



Parking
Complimentary parking



Electric Vehicle Charge Point
On-site charging

BAILBROOK HOUSE HOTEL

	Max Capacity	Cabaret	Classroom	Theatre	U-Shape	Boardroom	Reception	Dining	Dimensions (metres)	Meeting Rooms	Bedrooms
Brunel Suite	200	80	60	160	40	48	200	120	L17.8 x W8.4 x H3.5	12	88
Queen Charlotte	60	40	24	60	24	24	70	40	L9.4 x W6.4 x H4.4		
Newbridge	60	45	24	60	26	28	60	40	L9.7 x W8.5 x H2.5		
Cleveland	40	24	18	30	16	18	42	-	L8.2 x W6.8 x H2.5		
Duke of Clarence	40	20	18	30	18	20	30	30	L8.5 x W6.6 x H4.4		
Victoria	20	-	-	20	12	14	-	-	L7.3 x W4.5 x H2.5		
Midland	8	-	-	-	-	8	-	-	L5.4 x W3.5 x H2.5		
Pulteney	8	-	-	-	-	8	-	-	L5.4 x W3.5 x H2.5		
Alexandra	24	-	-	24	10	14	-	14	L6.6 x W5.1 x H3		
Royal Victoria	12	-	-	-	6	12	-	12	L5.7 x W5.1 x H3		
Sydney	10	-	-	-	-	10	-	10	L6 x W3.9 x H3		
Henrietta	10	-	-	-	-	8	-	10	L7.2 x W3.2 x H3		

Bailbrook House has a wonderful mix of period and modern function spaces. Ideal for large groups, the hotel also has a dedicated conference centre, Bailbrook Court, and offers free parking and extensive grounds for conferences and team building events.

Bailbrook House Hotel Eveleigh Avenue, London Road, Bath, Somerset BA1 7JD (sat nav BA1 7DA)
01225 855100 bailbrookhouse@handpicked.co.uk



RHINEFIELD HOUSE

HOTEL
THE NEW FOREST, HAMPSHIRE



At a Glance

50 bedrooms
9 flexible meeting rooms
Host up to 160 delegates
Dedicated meetings facility



Nearest Motorway Link

M27 8 miles



Nearest Airport

Bournemouth 20 miles
Southampton 22 miles



Nearest Train Station

Brockenhurst 3 miles
Southampton 20 miles



40 Acres

Private grounds



Swimming Pool and Gym

Indoor and outdoor pool, gym,
treatments



Wi-Fi

Complimentary high speed Wi-Fi



Parking

Complimentary parking



Electric Vehicle Charge Point

On-site charging

RHINEFIELD HOUSE HOTEL

	Max Capacity	Cabaret	Classroom	Theatre	U-Shape	Boardroom	Reception	Dining	Dimensions (metres)	Meeting Rooms	Bedrooms
Grand Hall	130	60	40	120	40	48	130	100	L15.8 x W7.5 x H11.3	9	50
Kings	100	30	26	80	30	36	100	50	L8.2 x W6.1 x H3.9		
Keepers	40	20	16	40	24	28	35	30	L9.7 x W5.4 x H3		
Hurst Castle	160	60	72	160	56	56	130	100	L14.6 x W8.3 x H3		
- Hurst Suite	50	24	30	50	24	24	50	40	L6.3 x W8.3 x H3		
- Castle Suite	60	30	45	60	34	28	80	50	L7.9 x W8.3 x H3		
Brockenhurst	12	6	6	-	8	12	10	12	L4.5 x W6.1 x H3		
Bucklers	12	6	6	-	8	12	10	12	L4.5 x W6.1 x H3		
Lyndhurst	12	6	6	-	8	12	10	12	L3.9 x W6.1 x H3		
Oriel	6	-	-	-	-	6	-	-	L4.9 x W4.4 x H3		

Located in the New Forest National Park and set in 40 acres of private grounds, Rhinefield House is a magnificent country house venue with traditional meeting rooms in the main house and a contemporary self-contained conference centre, Hurst Castle. Overlooking the forest from floor-to-ceiling windows, Hurst Castle has plenty of space and is ideal for meetings, conferences, product launches and exclusive use events.

Rhinefield House Hotel Rhinefield Road, Brockenhurst, Hampshire SO42 7QB (sat nav SO42 7QB)
01590 622922 rhinefieldhouse@handpicked.co.uk

MIDLANDS



9. Ettington Park Hotel
Stratford-upon-Avon, Warwickshire



11. New Hall Hotel & Spa
Sutton Coldfield, Birmingham



10. Fawsley Hall Hotel & Spa
Fawsley, Northamptonshire



12. Stanbrook Abbey Hotel
Callow End, Worcester

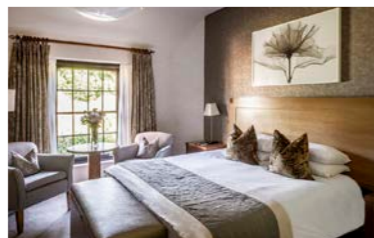
MIDLANDS

At a Glance

Prime locations for Birmingham, Worcester, Stratford-upon-Avon and Northampton

Access to Birmingham International airport

Connections to M40, M1, M6, M5 and other major roads



ETTINGTON PARK HOTEL

STRATFORD-UPON-AVON, WARWICKSHIRE



At a Glance

47 bedrooms
6 flexible meeting rooms
Host up to 100 delegates



Nearest Motorway Link

M40 11 miles



Nearest Airport

Birmingham 31 miles



Nearest Train Station

Stratford-upon-Avon 6 miles



40 Acres

Private grounds



Swimming Pool and Tennis Court

Pool, spa pool, steam room and sauna



Wi-Fi

Complimentary high speed Wi-Fi



Parking

Complimentary parking



Electric Vehicle Charge Point

On-site charging

ETTINGTON PARK HOTEL

	Max Capacity	Cabaret	Classroom	Theatre	U-Shape	Boardroom	Reception	Dining	Dimensions (metres)	Meeting Rooms	Bedrooms
Long Gallery	100	64	48	100	42	48	100	80	L21 x W5.4 x H6.1	6	47
Hathaway	100	40	32	90	30	35	100	60	L11.6 x W7.2 x H4.2		
Library	60	24	24	54	24	28	60	44	L10.5 x W4.6 x H6.2		
Courtyard	60	32	24	60	22	24	60	50	L10.7 x W5.9 x H2.7		
Chapel	24	-	-	24	-	14	-	14	L6.1 x W3.4 x H3.4		
Oval Office	10	-	-	-	-	8	-	10	L4.2 x W4.2 x H3.2		
Great Drawing Room also available for Exclusive Use only - Dining capacity 100											
5 syndicate rooms also available - Boardroom capacity 6											

Set within the stunning Cotswolds landscape and a stone's throw from Stratford-upon-Avon, Ettington Park is a Neo-Gothic mansion with versatile space inside and 40 acres of grounds in which to enjoy a full range of team building events.

Ideal for conferences, meetings and exclusive use events, Ettington Park's function rooms are full of character and charm yet offer natural daylight and a comfortable and inspiring environment for modern-day events.

Ettington Park Hotel Alderminster, Stratford-upon-Avon, Warwickshire CV37 8BU (sat nav CV37 8BU)
01789 450123 ettingtonpark@handpicked.co.uk



FAWSLEY HALL

HOTEL & SPA
FAWSLEY, NORTHAMPTONSHIRE

At a Glance



60 bedrooms
6 flexible meeting rooms
Host up to 180 delegates
Private cinema
Stand-alone Georgian Knightley Court



Nearest Motorway Link
M1 / M40 13 miles



Nearest Airport
Birmingham 25 miles



Nearest Train Station
Long Buckby 11 miles
Northampton 15 miles



Within a 2000 acre estate
Gardens landscaped by Capability Brown



Health Club and Spa
Gym, outdoor hydro pool, indoor pool



Wi-Fi
Complimentary high speed Wi-Fi



Parking
Complimentary parking



Electric Vehicle Charge Point
On-site charging

FAWSLEY HALL HOTEL & SPA

	Max Capacity	Cabaret	Classroom	Theatre	U-Shape	Boardroom	Reception	Dining	Dimensions (metres)	Meeting Rooms	Bedrooms
Saunders	180	64	64	120	40	40	180	120	L15.5 x W8.6 x H4	6	60
Salvin Longroom	120	56	36	100	35	40	120	90	L13.8 x W6.7 x H4.5		
Salvin Boardroom	90	40	24	80	25	28	90	60	L11.5 x W7.3 x H4.5		
Georgian Boardroom	14	-	-	-	-	14	-	-	L7 x W5 x H3.9		
Valentine Suite	90	48	35	90	-	35	90	60	L13.6 x W5.3 x H3.6		
- Valentine	65	32	18	54	20	25	65	40	L7.4 x W5.3 x H3.6		
- Bowater	24	-	10	24	12	14	20	20	L6.2 x W5.4 x H3.6		

Fawsley Hall is located in a beautiful rural position in the Northamptonshire countryside near to the Silverstone Circuit and within easy reach of major motorways.

With exceptional facilities for meetings, conferences and team building events, Fawsley Hall offers a number of function rooms in the main house in addition to the self-contained Knightley Court, a Grade II listed dedicated conference centre complete with a function suite, flexible meeting rooms, a bar, cloakrooms and a cinema.

Fawsley Hall Hotel & Spa Fawsley, Daventry, Northamptonshire NN11 3BA (sat nav NN11 3BA)
01327 892000 fawsleyhall@handpicked.co.uk



NEW HALL

HOTEL & SPA
SUTTON COLDFIELD, BIRMINGHAM

At a Glance



60 bedrooms
6 flexible meeting rooms
Host up to 200 delegates



Nearest Motorway Link
M6 Toll / M6 / M42 5 miles



Nearest Airport
Birmingham 12 miles



Nearest Train Station
Sutton Coldfield 2 miles /
Birmingham New Street 8 miles



26 Acres
Private grounds, pitch and putt



Health Club and Spa
Gym, pool, tennis court, spa



Wi-Fi
Complimentary high speed Wi-Fi



Parking
Complimentary parking

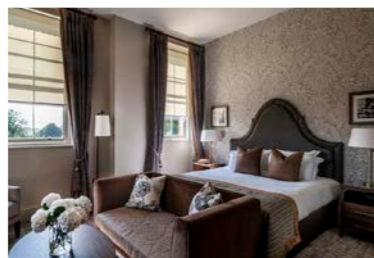
NEW HALL HOTEL & SPA

	Max Capacity	Cabaret	Classroom	Theatre	U-Shape	Boardroom	Reception	Dining	Dimensions (metres)	Meeting Rooms	Bedrooms
Garden Pavilion	200	120	80	180	50	60	200	150	L27 x W12 x H3.9	6	60
Chadwick	14	-	-	-	-	14	-	-	L6.8 x W4.9 x H2.8		
Great Chamber	65	30	18	65	30	30	60	50	L11.2 x W5.3 x H6		
Sir Alfred Owen	40	18	18	40	18	18	30	30	L6.7 x W7.3 x H2.8		
Garden Room	10	-	-	-	-	10	-	10	L5.7 x W4.5 x H2.7		
Oak	8	-	-	-	-	8	-	8	L4.4 x W4.2 x H2.2		

New Hall is a hidden gem set within glorious grounds and located within easy reach of the M6, M42 and the NEC.

Reputed to be the oldest inhabited moated property in England, New Hall has a number of unique venue spaces including the magnificent Great Chamber which was originally built for King Henry VIII. The chamber, with its intricately painted ceiling, original leaded windows and impressive outlook, is a popular historic venue for boardroom and cabaret meetings as well as unique private dining events.

New Hall Hotel & Spa Walmley Road, Sutton Coldfield, Birmingham B76 1QX (sat nav B76 1PH)
0121 378 2442 newhall@handpicked.co.uk



STANBROOK ABBEY

HOTEL
WORCESTER

At a Glance

70 bedrooms
15 flexible meeting rooms
Host up to 400 delegates
Games room, wine cellar and snooker room



Nearest Motorway Link

M5 5 miles



Nearest Airport

Birmingham 40 miles



Nearest Train Station

Worcester 5 miles



26 Acres

Private grounds



Wi-Fi

Complimentary high speed Wi-Fi



Parking

Complimentary parking



Electric Vehicle Charge Point

On-site charging

STANBROOK ABBEY HOTEL

	Max Capacity	Cabaret	Classroom	Theatre	U-Shape	Boardroom	Reception	Dining	Dimensions (metres)	Meeting Rooms	Bedrooms
Garden Pavilion	400	224	105	350	60	68	400	280	L24.1 x W14.8 x H4.1/2.7	15	70
St Anne's Hall	120	56	44	70	30	38	120	80	L13.8 x W8.5 x H8.7		
Library Bar	40	-	-	-	-	-	40	-	L8.2 x W6		
Callow Great Hall	200	32	20	200	-	54	200	54	L15.5 x W9.9 x H10.7		
Groom's Room	20	10	-	-	-	12	20	12	L6.1 x W6.1		
Boardroom	20	8	-	20	-	12	20	12	L6.2 x W6 x H3.4		
Clarence Room	20	10	12	20	-	14	20	16	L6.6 x W5 x H3.3		
East Room	60	32	20	60	24	32	60	50	L8.6 x W8.6 x H3.9		
Manor House	40	-	-	30	-	-	40	-	L7 x W5.5		
George's Bar	250	-	-	-	-	-	250	-	L19.7 x W10.2		
The Bake House	12	-	-	-	-	8	12	6	L4.5 x W3.6		
Nun's Hermitage	6	-	-	-	-	6	6	6	L3.8 x W3		
Monk's Hermitage	6	-	-	-	-	6	6	6	L3.8 x W3		
Wine Cellar	80	-	-	-	-	10	80	10	L4.6 x W2		
Games Room	20	-	-	-	-	-	20	-	L6.6 x W4.2		

Located five miles from the cathedral city of Worcester at the foot of the Malvern Hills, Stanbrook Abbey is one of the Midland's premier events spaces. A truly unique venue in its design and versatility, Stanbrook Abbey has multiple conference suites, traditional boardrooms, a games room, a garden pavilion and the impressive Callow Great Hall.

Stanbrook Abbey Hotel Jennet Tree Lane, Callow End, Worcester WR2 4TY (sat nav WR2 4TY)
01905 832940 stanbrookabbey@handpicked.co.uk

NORTH



13. Crathorne Hall Hotel
Yarm, North Yorkshire

NORTH

At a Glance

Prime locations for Manchester, Leeds and Middlesbrough

Access to Durham Tees Valley, Manchester and Leeds Bradford airports

Connections to M6, A1 and other major roads



14. Rookery Hall Hotel & Spa
Nantwich, Cheshire



15. Wood Hall Hotel & Spa
Wetherby, West Yorkshire



CRATHORNE HALL HOTEL YARM, NORTH YORKSHIRE



At a Glance

37 bedrooms
6 flexible meeting rooms
Host up to 160 delegates



Nearest Motorway Link

A19 / A1 / M1 1 mile



Nearest Airport

Teesside International Airport 8.5 miles



Nearest Train Station

Yarm 3.2 miles / Eaglescliffe 5.3 miles



15 Acres

Private grounds



Wi-Fi

Complimentary high speed Wi-Fi



Parking

Complimentary parking



Electric Vehicle Charge Point

On-site charging

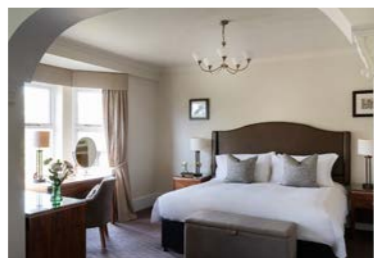
CRATHORNE HALL HOTEL

	Max Capacity	Cabaret	Classroom	Theatre	U-Shape	Boardroom	Reception	Dining	Dimensions (metres)	Meeting Rooms	Bedrooms
Drawing Room	160	80	70	140	40	40	160	120	L18.9 x W6.5 x H4.2	6	37
Edwardian Room	120	40	40	120	30	30	80	60	L11.5 x W6.5 x H4.2		
Presidents Lounge	30	24	30	30	15	20	30	26	L7.6 x W6.1 x H3.4		
Yorkshire	40	-	16	40	-	20	40	24	L9.7 x W3.8 x H3.3		
Durham	28	16	16	28	16	16	28	16	L6.2 x W6 x H3.4		
Cumbria	16	-	10	16	-	8	-	12	L4.3 x W4.5 x H3.3		

Located near to Teesside and midway between York and Newcastle, Crathorne Hall is a grand Edwardian property ideal for residential meetings and exclusive use events.

Meeting rooms have been sympathetically modernised to make the most of their traditional features and natural light. From board meetings to large conferences, Crathorne Hall's meeting spaces are light and airy and there are plenty of outdoor lawns and terrace spaces for alfresco dining and pre-event reception drinks.

Crathorne Hall Hotel Crathorne, Yarm, North Yorkshire TS15 0AR (sat nav TS15 0AR)
01642 700398 crathornehall@handpicked.co.uk



ROOKERY HALL

HOTEL & SPA
NANTWICH, CHESHIRE

At a Glance



69 bedrooms
7 flexible meeting rooms
Host up to 200 delegates
Team building activity field



Nearest Motorway Link
M6 10 miles



Nearest Airport
Manchester 25 miles



Nearest Train Station
Crewe 5 miles



38 Acres
Private grounds



Health Club and Spa
Gym, pool, classes, spa



Wi-Fi
Complimentary high speed Wi-Fi



Parking
Complimentary parking



Electric Vehicle Charge Point
On-site charging

ROOKERY HALL HOTEL & SPA

	Max Capacity	Cabaret	Classroom	Theatre	U-Shape	Boardroom	Reception	Dining	Dimensions (metres)	Meeting Rooms	Bedrooms
Worleston	200	120	90	200	50	60	200	160	L15.7 x W14.8 x H3.4	7	69
- Calveley	120	50	45	120	30	30	120	80	L15.7 x W7.4 x H3.4		
- Wardle	120	50	45	120	30	30	120	80	L15.7 x W7.4 x H3.4		
Wybunbury	120	60	45	100	50	50	120	70	L19.1 x W6.3 x H2.4		
- Tarvin	60	30	24	60	28	28	60	40	L10.6 x W6.3 x H2.4		
- Tarporley	40	24	18	40	20	20	40	30	L8.5 x W6.3 x H2.4		
Audlem	30	-	12	24	16	18	30	20	L7.8 x W4.8 x H2.4		
Burland	10	-	-	-	8	10	-	10	L4.9 x W4.9 x H2.4		
Weaver Bar	100	-	-	-	-	-	100	-	L9.9 x W8.2 x H3.2		

Rookery Hall is located amid breath-taking Cheshire countryside and within easy reach of Crewe, Stoke-on-Trent, Manchester, Liverpool and Chester.

With its mix of traditional, elegant function space in the main house along with an onsite self-contained dedicated conference centre and spa, Rookery Hall is a popular venue for product launches, large conferences and team building events in its extensive grounds.

Rookery Hall Hotel & Spa Main Road, Worleston, Nantwich, Cheshire CW5 6DQ (sat nav CW5 6DQ)
01270 610016 rookeryhall@handpicked.co.uk



WOOD HALL

HOTEL & SPA
WETHERBY, WEST YORKSHIRE



At a Glance

44 bedrooms
4 flexible meeting rooms
Host up to 100 delegates



Nearest Motorway Link

A1 / M1 5 miles



Nearest Airport

Leeds / Bradford 11 miles



Nearest Train Station

Harrogate 11 miles / Leeds 12 miles /
York 16 miles



100 Acres

Private grounds



Health Club and Spa

Gym, pool, spa



Wi-Fi

Complimentary high speed Wi-Fi



Parking

Complimentary parking



Electric Vehicle Charge Point

On-site charging

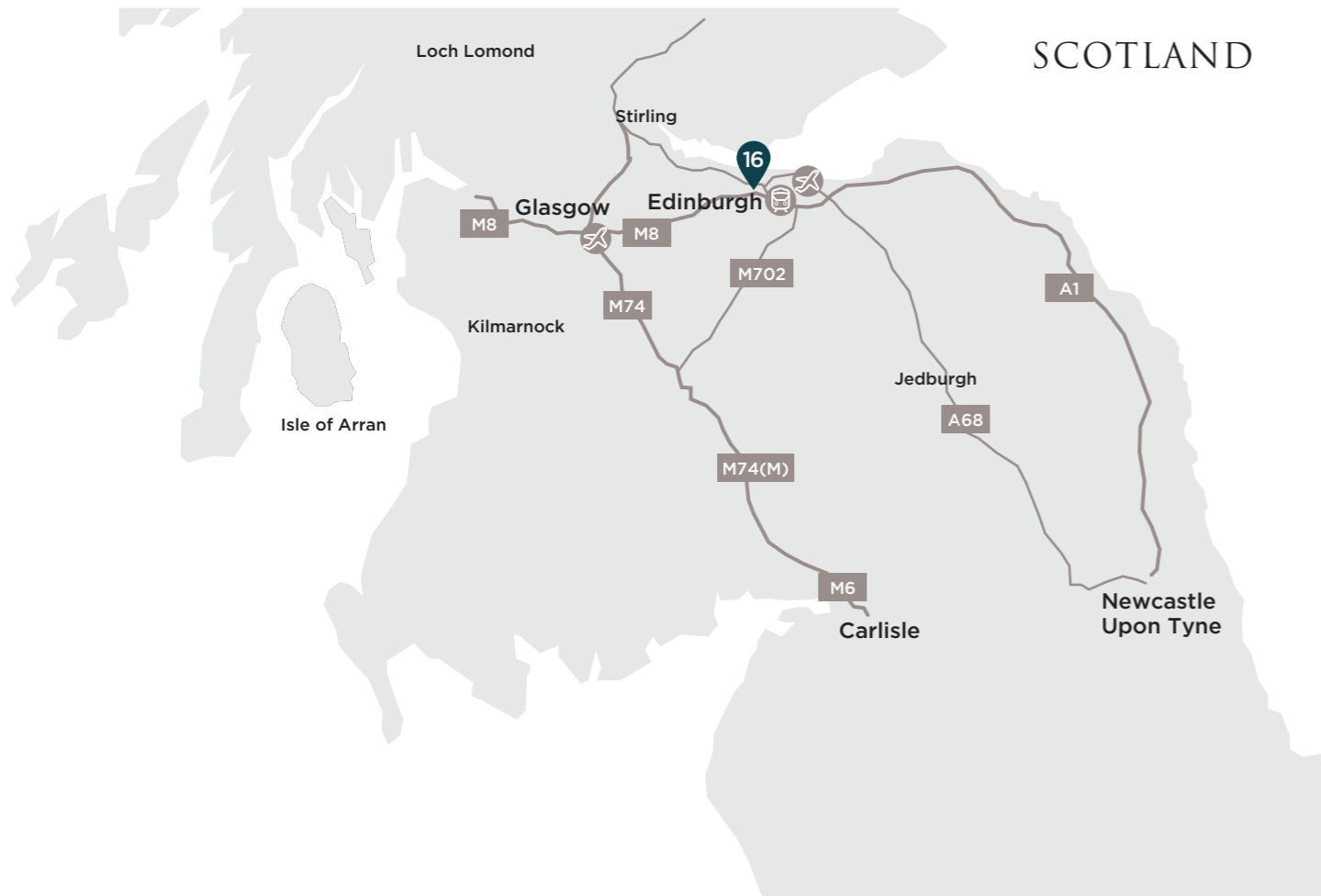
WOOD HALL HOTEL & SPA

	Max Capacity	Cabaret	Classroom	Theatre	U-Shape	Boardroom	Reception	Dining	Dimensions (metres)	Meeting Rooms	Bedrooms
Vavasour	100	60	40	100	45	40	100	100	L13.4 x W9.5 x H3.3	4	44
- Manton	50	32	20	50	18	20	-	50	L6.6 x W9.5 x H3.3		
- Denby	50	32	20	50	18	20	-	50	L6.6 x W9.5 x H3.3		
Wharfedale	20	-	10	20	14	16	20	20	L7.6 x W4.1 x H2.3		
Linton	14	-	-	-	-	10	-	14	L7.2 x W3.9 x H2.4		

Set high on a hill within 30 minutes of Leeds, Harrogate and York, Wood Hall is a grand country house that offers a variety of meeting spaces with an elegant blend of traditional and modern décor.

With dramatic views and a lovely ambience, Wood Hall creates a perfect setting for inspirational meetings and events and boasts plenty of outdoor space for dining and team building.

Wood Hall Hotel & Spa Trip Lane, Linton, Wetherby, West Yorkshire LS22 4JA (sat nav LS22 4JA)
01937 587271 woodhall@handpicked.co.uk



SCOTLAND

At a Glance

Easy access to Edinburgh airport and Edinburgh Gateway train station

Connections to M8, M9 and other major roads



NORTON HOUSE

HOTEL & SPA
EDINBURGH

At a Glance



83 bedrooms
14 flexible meeting rooms
Host up to 300 delegates
Dedicated conference facility



Nearest Motorway Link
M9 1 mile



Nearest Airport
Edinburgh 3 miles



Nearest Train Station
Edinburgh Gateway 4 miles



55 Acres
Private grounds



Health Club and Spa
Gym, pool, classes, spa



Wi-Fi
Complimentary high speed Wi-Fi



Parking
Complimentary parking



Electric Vehicle Charge Point
On-site charging

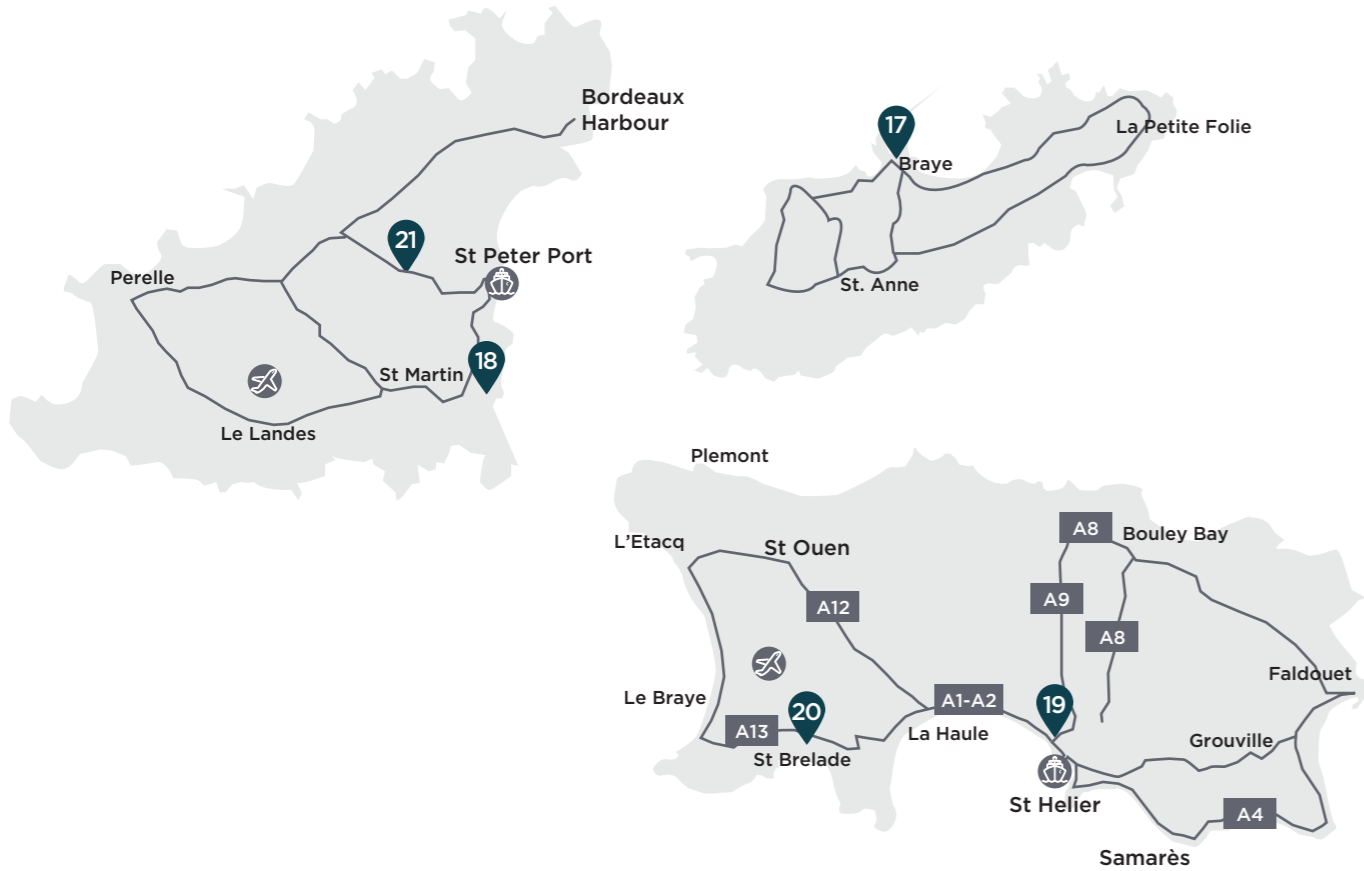
NORTON HOUSE HOTEL & SPA

	Max Capacity	Cabaret	Classroom	Theatre	U-Shape	Boardroom	Reception	Dining	Dimensions (metres)	Meeting Rooms	Bedrooms
Usher Suite	300	120	120	240	80	60	300	160	L18.5 x W11.6 x H3.4	14	83
Garden Suite	200	100	80	180	60	60	200	140	L16 x W10.5 x H3.5		
- Meadow	80	40	30	80	24	24	80	60	L10.5 x W8 x H3.5		
- Orchard	80	40	30	80	24	24	80	60	L10.5 x W8 x H3.5		
Oak	70	20	16	40	18	16	70	40	L11.5 x W8 x H2.4		
Verandah	60	24	20	40	24	24	60	40	L8.8 x W5.9 x H3.4		
The Linden	40	20	16	40	16	16	40	30	L7.4 x W5.2 x H3.8		
Gathering 1	20	-	-	20	-	14	-	-	L4.5 x W3.5 x H3		
Gathering 2	20	-	-	20	-	14	-	-	L4.5 x W3.5 x H3		
Gathering 3	16	-	-	16	-	8	-	-	L4 x W2.5 x H2.5		
Gathering 4	30	-	-	30	-	16	-	-	L5.6 x W3.9 x H2.4		
Gathering 5	16	-	-	16	-	8	-	-	L3.3 x W3.5 x H2.4		
Gathering 6	30	-	-	30	-	16	-	-	L5.4 x W3.4 x H2.4		
The Redwood	30	12	16	30	12	16	30	30	L7.3 x W5 x H4		
Drawing Room	40	20	20	40	16	20	40	30	L7.3 x W5.1 x H3.5		

Set within 55 acres of peaceful countryside, Norton House is a country house hotel just five minutes from Edinburgh airport. With versatile function space, Norton House boasts a number of meeting rooms and function suites as well as a modern, dedicated conference centre located within a pretty original walled garden.

Norton House Hotel & Spa Ingliston, Edinburgh EH28 8LX (sat nav EH28 8LX)
0131 333 1275 nortonhouse@handpicked.co.uk

CHANNEL ISLANDS



CHANNEL ISLANDS

At a Glance

Prime locations for St Peter Port, St Helier and St Brelade's Bay

Access to Jersey and Guernsey airports

Daily sailings from the UK and France



GRAND JERSEY

HOTEL & SPA
ST HELIER, JERSEY

At a Glance

108 bedrooms
7 flexible meeting rooms
Host up to 200 delegates
Idyllic views of St Aubin's Bay and Elizabeth Castle
Private cinema



Nearest Airport

Jersey 4 miles / access from major UK airports



Ferries

Daily sailings from the UK and France



Sea View

Beachside hotel



Health Club and Spa

Gym, pool, spa



Wi-Fi

Complimentary high speed Wi-Fi



Parking

Limited spaces available



Electric Vehicle Charge Point

On-site charging

GRAND JERSEY HOTEL & SPA

	Max Capacity	Cabaret	Classroom	Theatre	U-Shape	Boardroom	Reception	Dining	Dimensions (metres)	Meeting Rooms	Bedrooms
Grand Suite	200	72	80	150	40	50	200	100	L20.5x W7.9x H3.7	7	108
Alice Suite	8	-	-	-	-	8	-	8	L5.5 x W4.5 x H2.5		
Leopold Suite	80	36	30	55	24	26	80	60	L8.1 x W12.5 x H2.5		
- Arthur Suite	35	-	20	30	22	22	35	18	L8.1 x W6.3 x H2.5		
- Alfred Suite	35	-	20	30	22	22	35	18	L8.1 x W6.3 x H2.5		
Beatrice Suite	16	-	-	-	-	16	-	-	L7.5 x W6.5 x H2.5		
Private Cinema	35	-	-	35	-	-	-	-	L6 x W5 x H2.5		
Park Suites Foyer	100	-	-	-	-	-	100	-	L8.1 x W7.4		

Grand Jersey Hotel and Spa offers stylish function rooms combined with exceptional food choices and accompanying views of St Aubin's Bay. Located just 15 minutes from Jersey Airport and within walking distance of St Helier.

Park Suites features a number of different spaces to cater for a variety of events. These include intimate meeting rooms perfect for board meetings, an executive lounge area with a bar for informal break-out sessions and flexible event spaces for exhibitions and showcases. There is also a custom-built private cinema perfect for hosting presentations.

Grand Jersey Hotel & Spa Esplanade, St Helier, Jersey JE2 3QA (sat nav JE2 3QA)
01534 722301 grandjersey@handpicked.co.uk



L'HORIZON

— BEACH HOTEL & SPA —
ST BRELADE'S BAY, JERSEY

At a Glance



106 bedrooms
5 flexible meeting rooms
Host up to 200 delegates
Set directly on the beach



Nearest Airport

Jersey 2 miles / access from major UK airports



Ferries

Daily sailings from the UK and France



Sea View

Beachside hotel



Health Club and Spa

Gym, pool, spa



Wi-Fi

Complimentary high speed Wi-Fi



Parking

Complimentary parking



Electric Vehicle Charge Point

On-site charging

L'HORIZON BEACH HOTEL & SPA

	Max Capacity	Cabaret	Classroom	Theatre	U-Shape	Boardroom	Reception	Dining	Dimensions (metres)	Meeting Rooms	Bedrooms
Crystal	200	150	100	200	60	70	200	200	L22.8 x W12.2 x H3.1	5	106
- Crystal (East)	120	100	70	120	50	50	120	120	L15.5 x W12.2 x H3.1		
- Crystal (West)	60	48	40	60	28	25	60	50	L7.3 x W12.2 x H3.1		
Drawing Room	40	30	16	40	20	24	40	30	L8.9 x W5.6 x H2.4		
The Boardroom	14	-	-	-	-	14	-	-	L9 x W4.5 x H2.9		
Atlantic Lounge (Private dining only)	40	-	-	-	-	-	40	40	L10.4 x W7.7 x H2.2		

If you are looking for a stunning beachside setting then look no further than L'Horizon Beach Hotel and Spa, located in the middle of St Brelade's Bay on the island of Jersey.

The hotel is easily accessible, just 2 miles from Jersey Airport with connections to a number of UK airports and regular flights every day. The hotel is well suited for residential training, conferences or team building events and the setting provides the perfect backdrop for fresh thinking.

L'Horizon Beach Hotel & Spa La Route de la Baie, St Brelade, Jersey JE3 8EF (sat nav JE3 8EF)
01534 743101 | lhORIZON@handpicked.co.uk



ST PIERRE PARK

— HOTEL, SPA & GOLF RESORT —
ST PETER PORT, GUERNSEY

At a Glance



116 bedrooms
7 flexible meeting rooms
Host up to 350 delegates
Golf course on-site



Nearest Airport

Guernsey 4 miles / access from major UK airports



Ferries

Daily sailings from the UK and France



35 Acres

Private grounds, golf course



Health Club and Spa

Gym, pool, classes, spa



Wi-Fi

Complimentary high speed Wi-Fi



Parking

Complimentary parking

ST PIERRE PARK HOTEL, SPA & GOLF RESORT

	Max Capacity	Cabaret	Classroom	Theatre	U-Shape	Boardroom	Reception	Dining	Dimensions (metres)	Meeting Rooms	Bedrooms
La Fontaine Suite	350	184	150	320	70	78	350	288	L23.2 x W19 x H2.7	7	116
La Seigneurie	200	80	100	200	60	78	200	144	L20.1 x W9.6 x H2.9		
Petite Fontaine	50	32	30	50	28	30	50	48	L10.1 x W7.6 x H2.7		
Petite Seigneurie	50	32	25	50	28	30	50	40	L9.3 x W7.1 x H2.9		
Victor Hugo Suite	120	80	75	150	60	70	120	108	L24.5 x W7.9 x H2.3		
- Liberte	50	32	25	50	22	26	50	36	L10 x W7.9 x H2.3		
- Fraternite	50	24	25	50	22	24	50	36	L7.7 x W7.9 x H2.3		
- Egalite	50	24	25	50	16	20	50	36	L6.8 x W7.9 x H2.3		

Situated in St Peter Port in Guernsey, St Pierre Park has the most comprehensive offering for meetings, conferences, team building and incentive experiences on the island under one roof.

Providing an inspirational setting for award ceremonies, product launches and team building events with extensive space both inside and out.

St Pierre Park Hotel, Spa & Golf Resort St Peter Port, Guernsey GY1 1FD (sat nav GY1 1FD)

01481 728282 stpierrepark@handpicked.co.uk



FERMAIN VALLEY

HOTEL
ST PETER PORT, GUERNSEY

At a Glance



47 bedrooms
1 flexible meeting space
Host up to 60 delegates
Private cinema & Adventure Rooms



Nearest Airport
Guernsey 3 miles



Ferries
Daily sailings from UK and France



Sea View
Clifftop hotel



6 Acres
Private grounds



Tree House Spa
Indoor pool, spa, retreats



Wi-Fi
Complimentary high speed Wi-Fi



Parking
Complimentary parking

Fermain Valley Hotel

St Peter Port, Guernsey GY1 1ZZ
01481 235 666
reservations.fermain@handpicked.co.uk



BRAYE BEACH

HOTEL
ALDERNEY

At a Glance



27 bedrooms
1 flexible meeting space
Private cinema
Host up to 16 delegates



Nearest Airport
Alderney 1.5 miles



Sea View
Beachside hotel



Wi-Fi
Complimentary high speed Wi-Fi



Parking
Complimentary parking

Braye Beach Hotel

Braye Street, Alderney, Channel Islands GY9 3XT
01481 824 300
brayebeach@handpicked.co.uk

		Page Number	Max Capacity	Cabaret	Classroom	Theatre	U-Shape	Boardroom	Reception	Dining		Largest room dimensions (metres)	Meeting Rooms	Bedrooms	Nearest Airport (miles)	Nearest Motorway (miles)	Nearest Train Station (miles)	Gym	Spa	Pool
M25 & South East	Brandshatch Place Hotel & Spa Kent	12	160	60	48	160	36	31	150	110		L14.4 x W11.1 x H3	6	38	London City (20)	M25/M20 (5)	Longfield (2)	✓	✓	✓
	Buxted Park Hotel East Sussex	14	200	84	60	180	45	50	200	120		L13.6 x W9.1 x H4	5	43	Gatwick (24)	M23/M25 (24)	Buxted (0.5)	-	-	-
	Chilston Park Hotel Kent	16	150	46	50	120	40	50	150	100		L15.2 x W7.8 x H3	8	53	Gatwick (43)	M25/M20 (6)	Lenham (1.5)	-	-	-
	Nutfield Priory Hotel & Spa Surrey	18	120	60	50	100	40	42	120	100		L12.6 x W8.8 x H4.9	9	58	Gatwick (10)	M25 (4)	Redhill (2)	✓	✓	✓
	Woodlands Park Hotel Surrey	20	200	90	40	200	44	50	200	150		L13 x W12 x H3	8	57	Heathrow (16)	M25 (6)	Cobham (1)	✓	-	-
South West	Audleys Wood Hotel Hampshire	24	200	160	80	200	45	40	200	200		L30 x W12 x H2.3	6	68	Southampton (31)	M3 (2)	Basingstoke (2)	-	-	-
	Bailbrook House Hotel Bath	26	200	80	60	160	40	48	200	120		L17.8 x W8.4 x H3.5	12	88	Bristol (20)	M4 (8)	Bath Spa (2.5)	✓	-	-
	Rhinefield House Hotel Hampshire	28	160	60	72	160	55	56	130	100		L14.6 x W8.3 x H3	9	50	Bournemouth (20)	M27 (8)	Brockenhurst (3)	✓	✓	✓
Midlands	Ettington Park Hotel Warwickshire	32	100	64	48	100	42	48	100	100		L21 x W 5.4 x H 6.1	6	47	Birmingham (31)	M40 (11)	Stratford-upon-Avon (6)	-	-	✓
	Fawsley Hall Hotel & Spa Northamptonshire	34	180	64	64	120	40	40	180	120		L15.5 x W8.6 x H4	6	60	Birmingham (25)	M1/M40 (13)	Long Buckby (11)	✓	✓	✓
	New Hall Hotel & Spa Birmingham	36	200	120	80	180	50	60	200	150		L27 x W12 x H3.9	6	60	Birmingham (12)	M6/M42 (5)	Sutton Coldfield (2)	✓	✓	✓
	Stanbrook Abbey Hotel Worcester	38	400	224	105	350	60	68	400	280		L24.1 x W14.8 x H4.1/2.7	15	70	Birmingham (40)	M5 (5)	Worcester (5)	-	-	-
North	Crathorne Hall Hotel North Yorkshire	42	160	80	70	120	50	50	160	100		L18.9 x W6.5 x H4.2	6	37	Teesside Int. Airport (8.5)	A19 (1)	Yarm (3.2)	-	-	-
	Rookery Hall Hotel & Spa Cheshire	44	200	120	90	200	50	60	200	160		L15.7 x W14.8 x H3.4	7	69	Manchester (25)	M6 (10)	Crewe (5)	✓	✓	✓
	Wood Hall Hotel & Spa West Yorkshire	46	100	60	40	100	45	40	100	100		L13.4 x W9.5 x H3.3	4	44	Leeds/Bradford (11)	A1 (5)	Harrogate (11)	✓	✓	✓
Scotland	Norton House Hotel & Spa Edinburgh	50	300	120	120	240	80	60	300	200		L18.5 x W11.6 x H3.4	14	83	Edinburgh Gateway (4)	M9 (1)	Edinburgh Haymarket (7)	✓	✓	✓
Channel Islands	Grand Jersey Hotel & Spa Jersey	54	200	72	80	150	40	50	200	100		L20.5 x W7.9 x H3.7	7	108	Jersey (4)	-	-	✓	✓	✓
	L'Horizon Beach Hotel & Spa Jersey	56	200	150	100	200	60	70	200	200		L22.8 x W12.2 x H3.1	5	106	Jersey (2)	-	-	✓	✓	✓
	St Pierre Park Hotel, Spa & Golf Resort Guernsey	58	350	184	150	320	70	78	350	276		L23.2 x W19 x H2.7	7	116	Guernsey (4)	-	-	✓	✓	✓
	Braye Beach Hotel Alderney	60	16	16	16	16	16	16	16	16		L6 x W6 x H3	1	27	Alderney (1.5)	-	-	-	-	-
	Fermain Valley Hotel Guernsey	60	80	40	70	40	24	24	80	70		L7 x W7 x H3	1	47	Guernsey (3)	-	-	-	✓	✓



Hand Picked Hotels

Meetings and Events Desk
The Stables, Crathorne Hall Hotel, Crathorne,
Yarm, North Yorkshire TS15 0AR

01642 706600

businessevents@handpicked.co.uk

handpickedhotels.co.uk

